



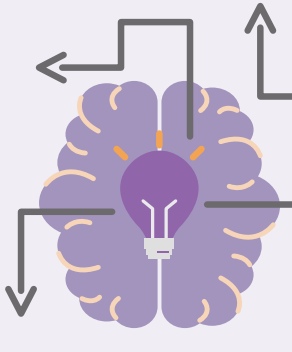
GHADI ALLUQMANI RAOOM KHAN

KHLOOD ALAWLAQI RENAD TKROUNI

SUPERVISED BY : DR. REEM SALEH AL ASHAIKH

ABSTRACT

Alzheimer's Disease (AD) :

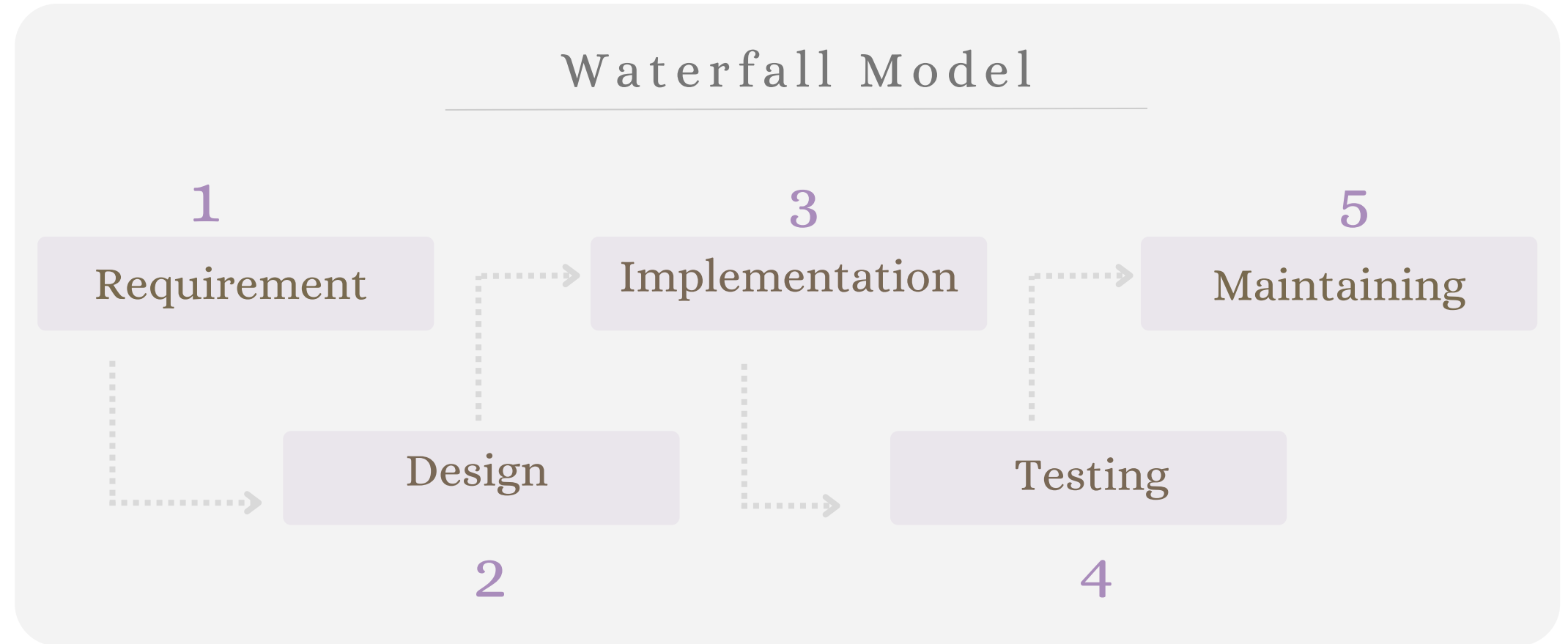


Debilitating condition that affects millions of people worldwide, and it is known to severely impact their daily lives. As the disease progresses, patients may experience memory loss, difficulty with language and communication, disorientation, and confusion, making it challenging for them to manage their daily routines. Thus, the aim of our project "**Anees**" work's to support Alzheimer's patients with mild cases to remain involved in the community and continue to live independently.

OBJECTIVES

1. Develop a comprehensive framework for interacting with individuals affected by Alzheimer's disease.
2. Improve the quality of life for individuals with Alzheimer's by enhancing their social interactions and overall well-being.
3. Provide valuable support and guidance for both Alzheimer's patients and their care partners.

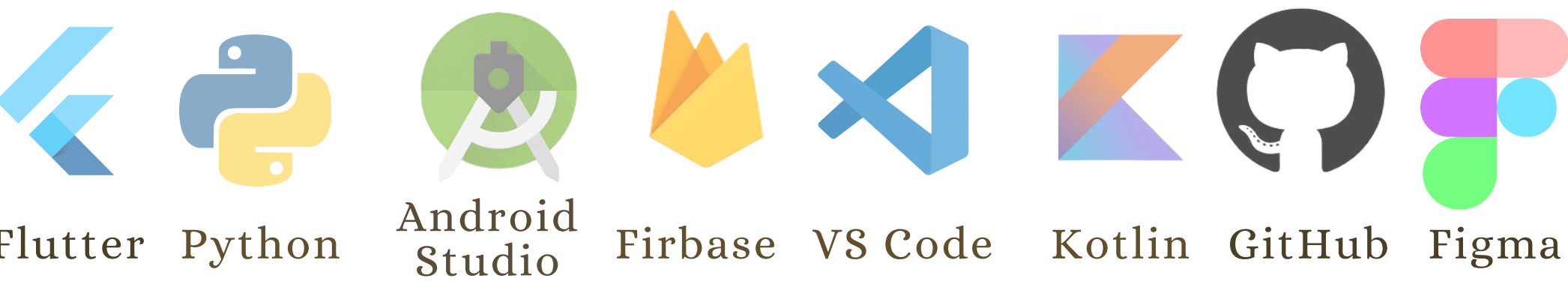
METHODOLOGY



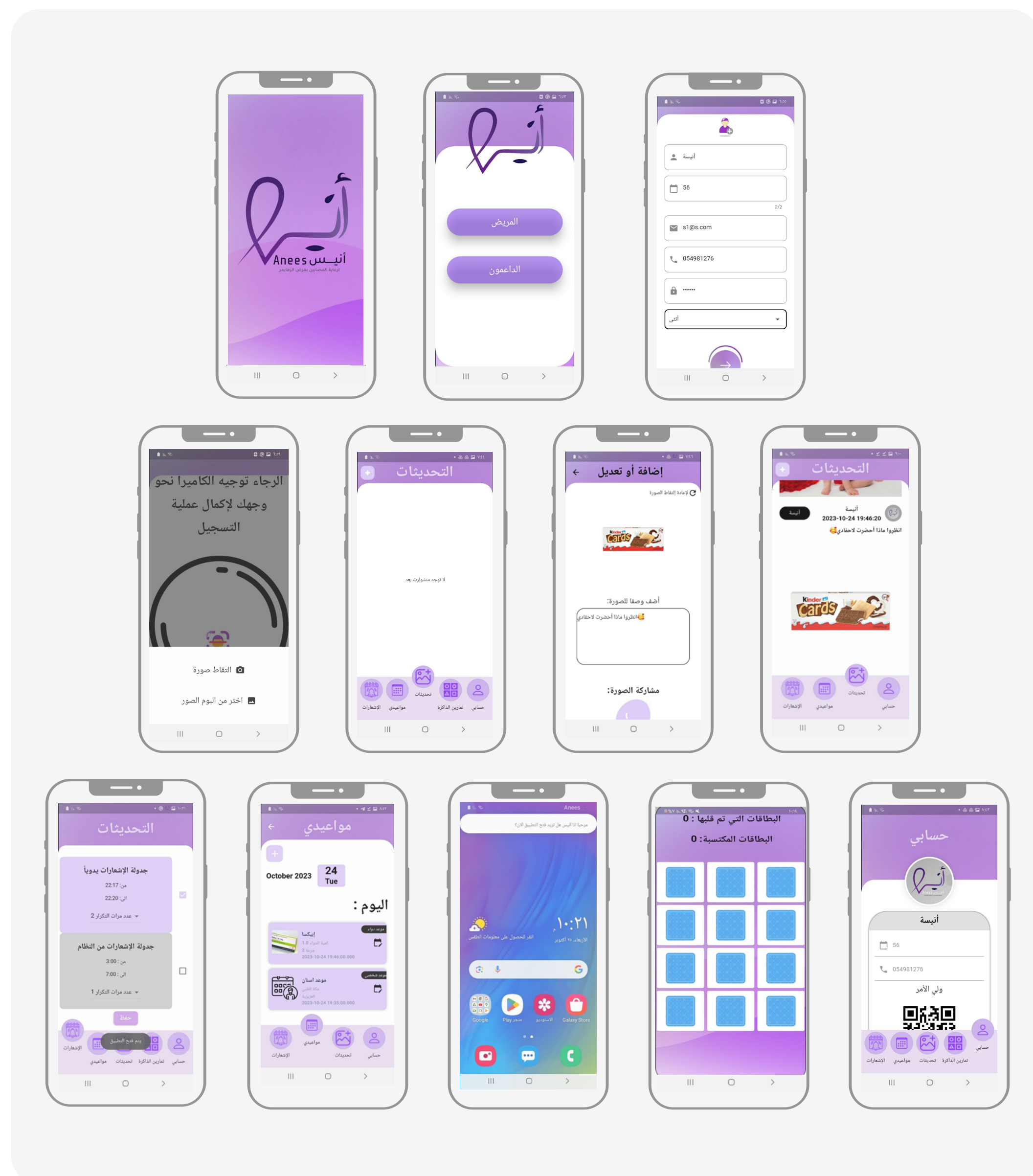
RESULTS

Voice notification Scheduling Communication (NLP) Sharing

TOOLS



INTERFACE



CONCLUSION

This project aims to improve the lives of Alzheimer's disease (AD) patients and their caregivers through a comprehensive framework, focusing on social, psychological, and care-related needs to enhance well-being. By assessing current methods and addressing challenges, our goal is to positively impact the quality of life for those affected by AD.

FUTURE WORK

- 01 Expand and add Diversify Dataset
- 02 Make the application compatible with interactive screens
- 03 Expand the range of exercises and activities

References

Contact Us

DEMO Demo

