

نافع | Nafee



Pilgrim's information by Face Recognition to facilitate hospital procedures

Maarib Al-Sulimani | Ghala Alharbi | Nujud Althagafi | Randa Alminami
Supervised by : Dr.Olfat Mirza

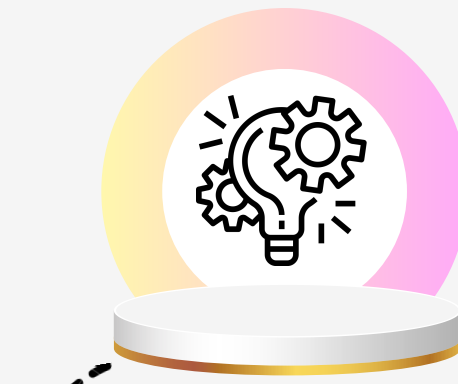


Dept. of Computer science and Artificial Intelligence, Umm Al-Qura University, KSA, 2023.

Abstract

The Nafee application, developed using AI, Deep Learning, and Face recognition technology, aims to improve the verification of pilgrims' identities and visas during the Hajj period, specifically in Hospitals in Saudi Arabia. The Nafee application allows hospitals to access pilgrims' visas to validate their entitlements to free treatment, streamlining procedures, reducing fraud, and enhancing healthcare services for pilgrims during the Hajj season.

Objectives



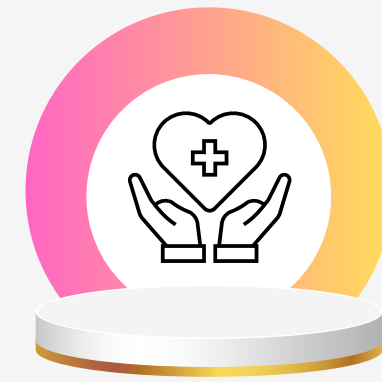
Employing technology to serve the pilgrims

The Nafee application features a face recognition feature that efficiently identifies and displays the visa information of pilgrims.



Improving the flow of procedures in hospitals

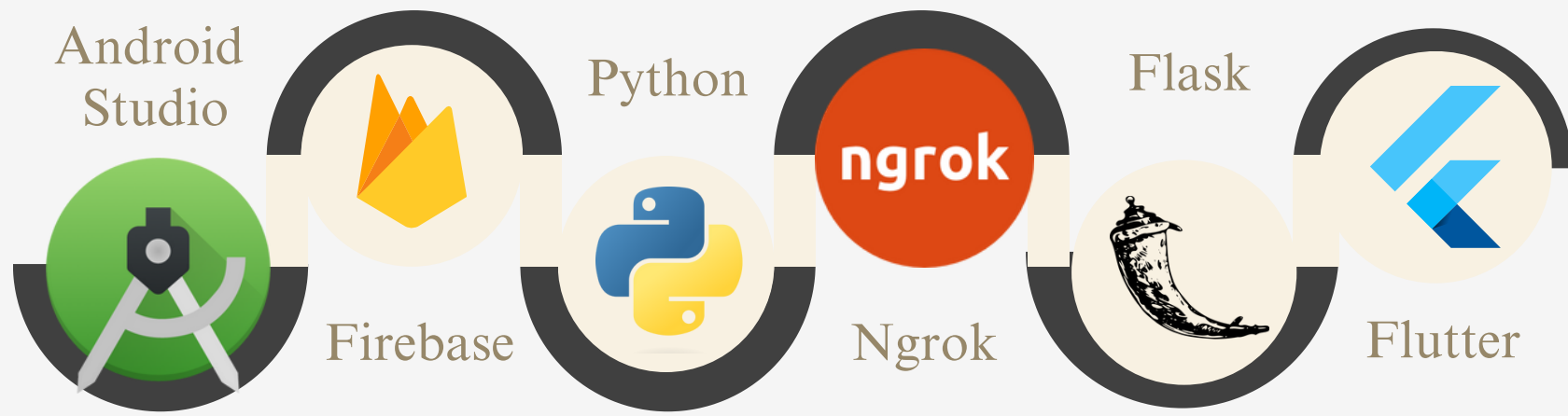
The Nafee application simplifies pilgrim visa access, validates free treatment entitlements, streamlines procedures, and reduces fraud.



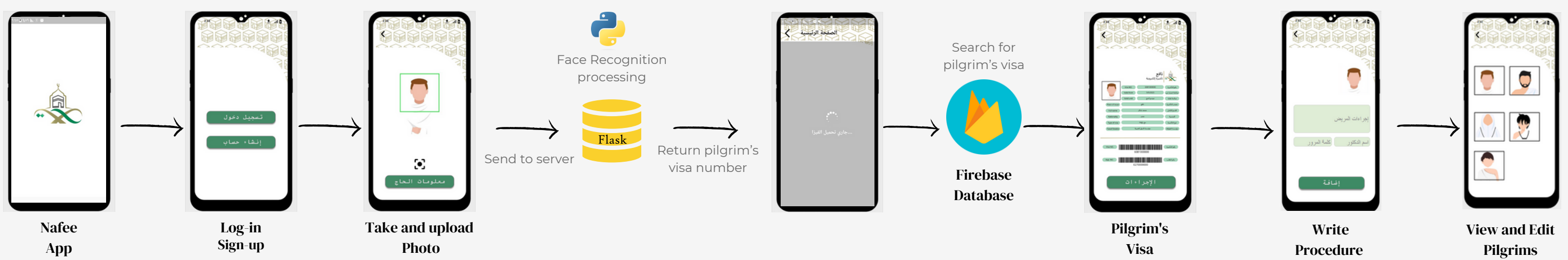
Enhancing the Healthcare Experience for Pilgrims

The pilgrim has a pleasant experience in the health sector.

Development Tools



Nafee application workflow



Future Development Plans

Extending Availability

Be made accessible year-round, not just during Hajj season, allowing users to enjoy its features and services on an ongoing basis.

Expanding the circle of the target group

Our goal is to expand the target group beyond hospitals and support various social groups, including citizens and residents, by quickly and effectively presenting Personal proof.

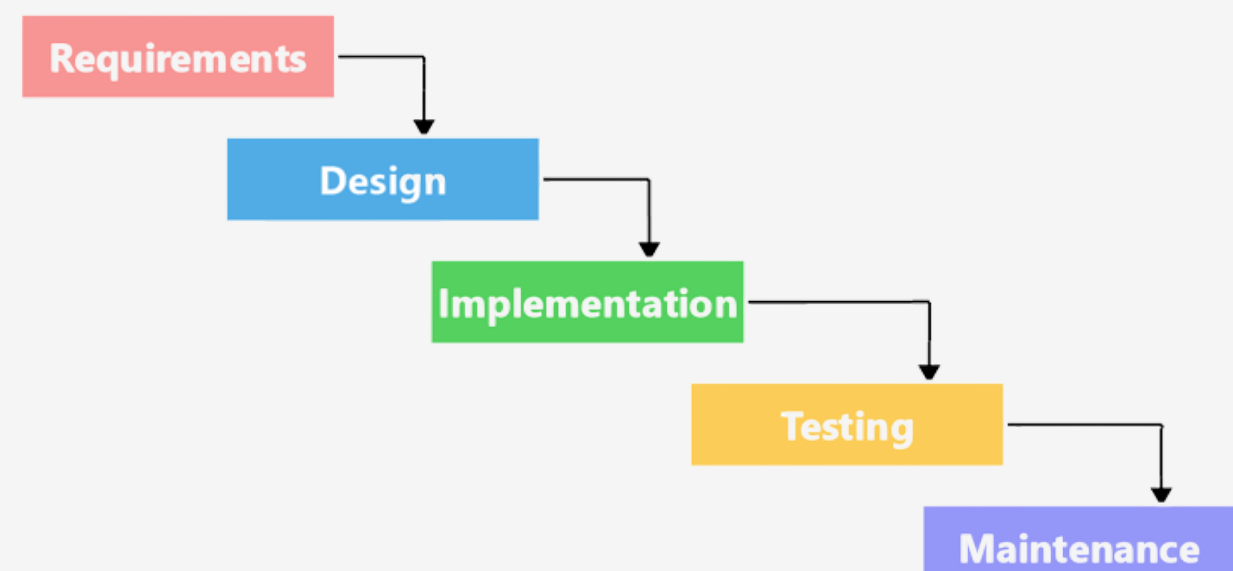
Multilingual Support

We plan to enhance our program's support for multiple languages, ensuring inclusivity and accessibility for a wider user base.

Performance Optimization

Our focus is on enhancing the program's performance, addressing any issues, optimizing code, and enhancing response times for smooth and efficient operation.

Methodology



Contact :



nafeeapplication@gmail.com



@Nafeegroup

Demo

