

## Students:

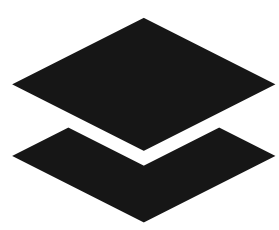
Mohammad Abdullah Alqthami  
Salman Faisal Alharbi

Elyas Salim Balgasim  
Abdulrahman Ali Alhazmi

## Professor:

Imran A. Tasadduq

Computer Engineering Department  
College of Computer and Information Systems  
Umm Al Qura University



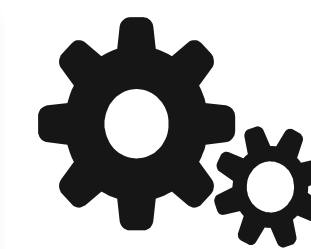
### Abstract

This project is a program that helps bridge signed and oral speech to make reciprocal communication possible.



### Introduction

There are disabilities afflicting a variety of people, resulting in a communication disability. A solution is required to enable it.

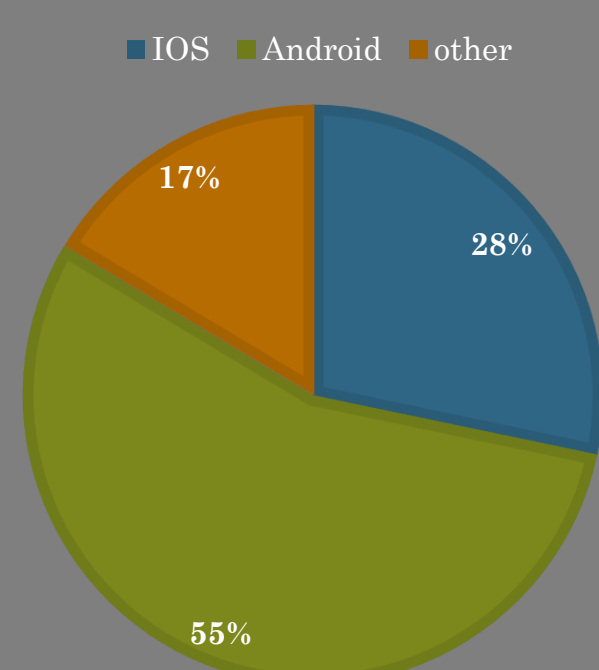


### Methods

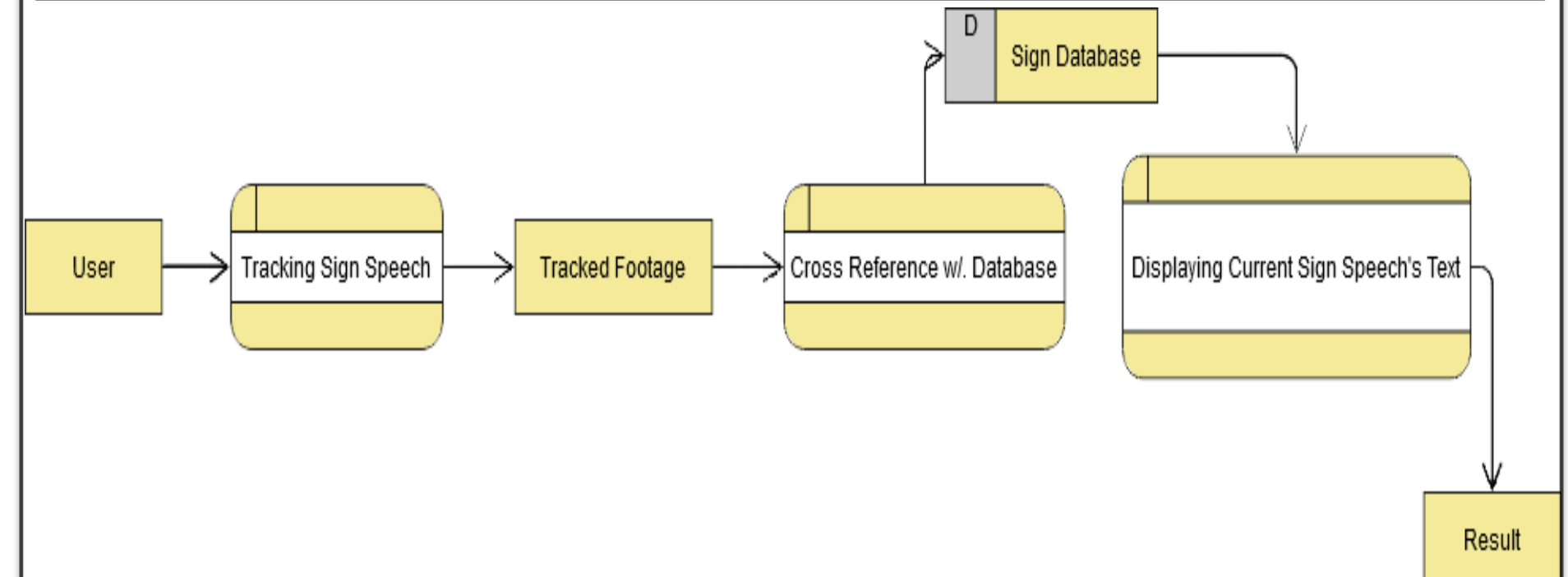
We track signed & oral speech, afterwards we interpret and show what was processed. Thus, creating a reciprocal channel.

## Environment, Modeling, Justification and Result

### Environment



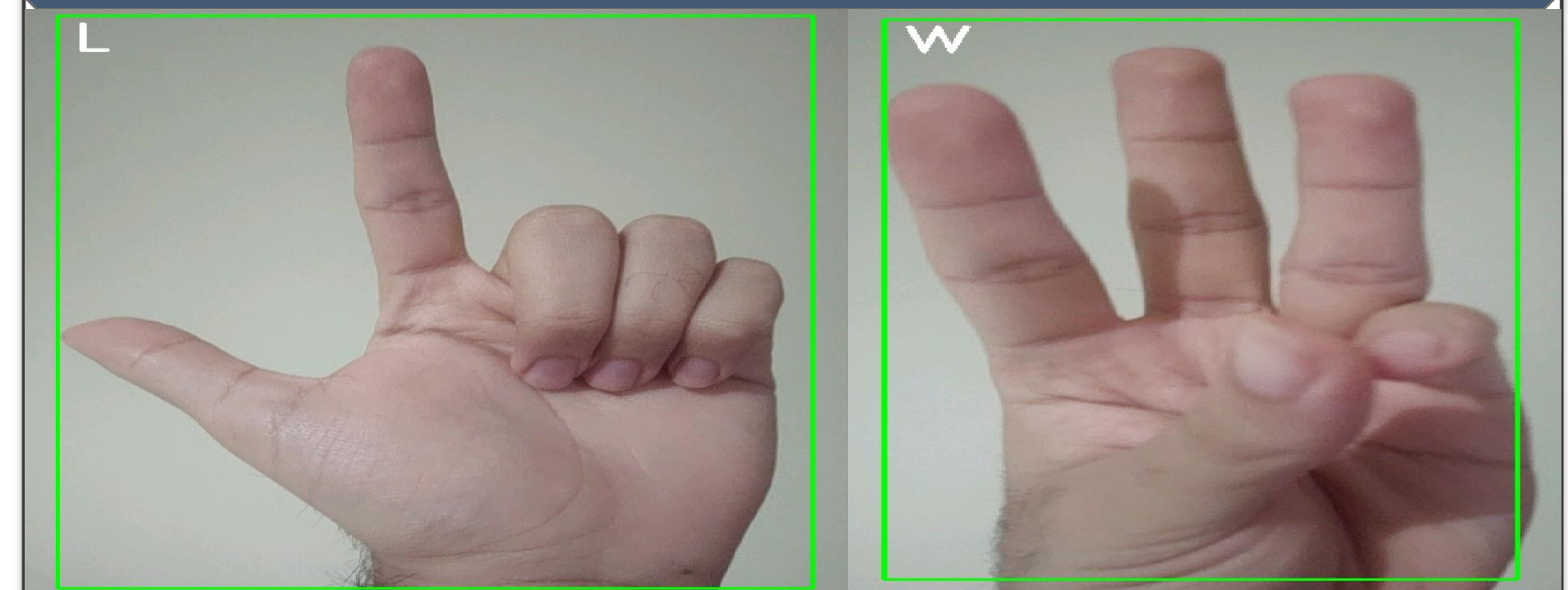
### Model



### Justification

| Block                                  | Justification                                     |
|--|---|
| User                                   | System idle state.                                |
| -Tracking Sign Speech                  | CNN and other models to track signed/oral speech. |
| Tracked Footage                        | Raw tracking footage.                             |
| -Cross Reference w/. Database          | Overlapped w/ database.                           |
| Sign Database                          | Saved pool of signed/oral lang-.                  |
| -Displaying Current Sign Speech's Text | After crossing, display processed result.         |
| Result                                 | System complete state.                            |

### Result



## Programs Used

